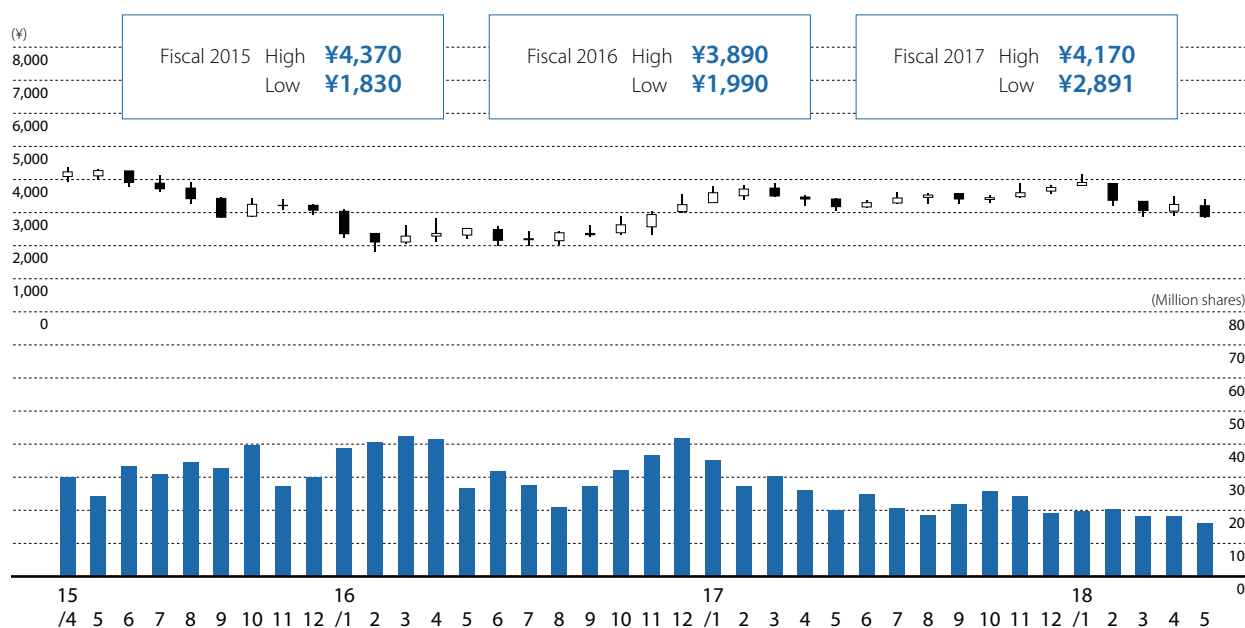


# Shareholder Information

Capital	¥65,400,351,028	
Head office	1-1, Toranomon 2-chome, Minato-ku, Tokyo 105-8688, Japan	
Number of MOL employees	975	
Number of MOL Group employees (The parent company and consolidated subsidiaries)	10,828	
Total number of shares authorized	315,400,000	
Number of shares issued	120,628,611	
Number of shareholders	86,927	
Shares listed in	Tokyo	
Share transfer agent (Contact information)	Sumitomo Mitsui Trust Bank, Limited Stock Transfer Agency Business Planning Department 8-4, Izumi 2-chome, Suginami-ku, Tokyo 168-0063, Japan	
Communication materials	MOL Report (English/Japanese) Investor Guidebook (English/Japanese) Market Data (English/Japanese) News Releases (English/Japanese) Website (English/Japanese)	

(As of March 31, 2018)

## Stock Price Range (Tokyo Stock Exchange) and Volume of Stock Trade\*



\* The Company consolidated its common shares on the basis of one (1) unit for every ten (10) shares effective October 1, 2017. Figures of FY2015/FY2016 are calculated on the assumption that the consolidation of shares was conducted at the beginning of FY2015/FY2016.